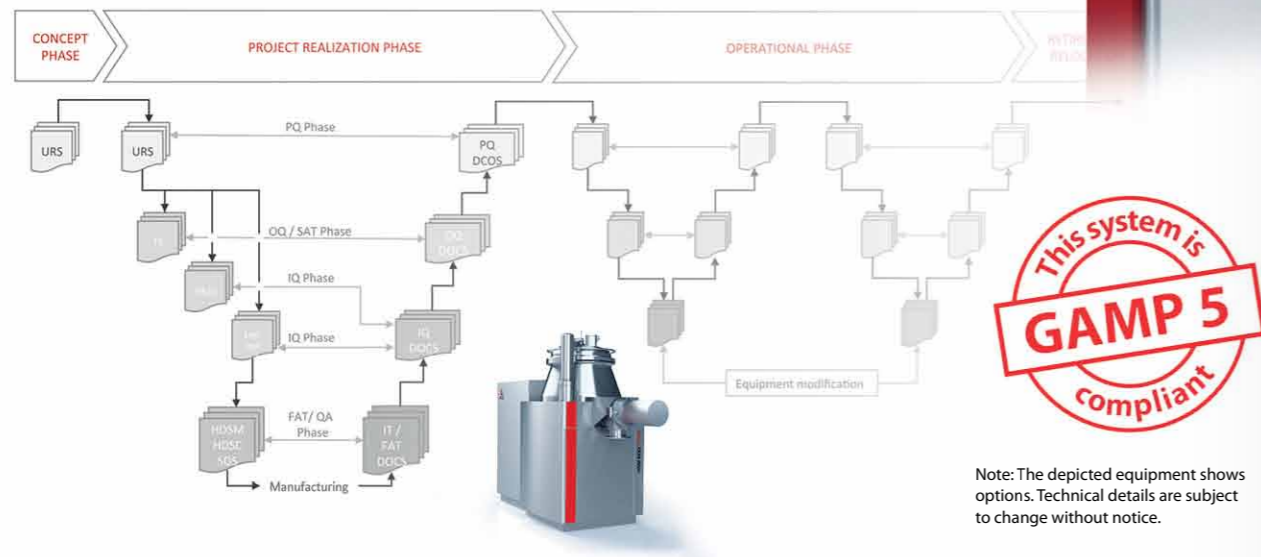


# ACG X·ONE COMMAND

Process control the easy way!

- ▶ **You'll get what you ask for**  
PC-based control system with COPADATA *zenon* software. SPS by Siemens, Mitsubishi or Allen Bradley. Interfaces to MES, ERP, local networks or database for long term process documentation.
- ▶ **Globally respected**  
CE, ATEX, UL, GAMP 5 – the **ACG X·ONE COMMAND** matches all major global standards.
- ▶ **FDA and GAMP 5 compliant**  
We develop our software according to GAMP directives. It complies with all requirements of CFR 21 Part 11 (electronic records and signatures). Your system will be qualified based on GAMP lifecycle, including all documentation. It doesn't get any better!



Note: The depicted equipment shows options. Technical details are subject to change without notice.

**ACG Pharma Technologies Pvt. Ltd.**  
Plot No. 1100, Shirwal  
Dist. Satara - 412801  
Phone +91.2169. 304500  
sales.ap@acg-world.com

Sales and service partner for Europe and North America:



**XERTECS GmbH**  
Haltinger Str. 8  
79379 Müllheim, Germany  
Office +49 (0) 7631 / 9 36 85-0  
Fax +49 (0) 7631 / 9 36 85-299  
info@xertecs.com  
www.xertecs.com

**XERTECS Inc.**  
999 Riverview Drive, Suite 201  
Totowa, NJ 07512, USA  
Office +1 (732) 515-7390  
Fax +1 (732) 515-7391  
info.usa@xertecs.com

HSM\_GB\_04/2016



# HSM X·ONE

## ADVANCED GRANULATION TECHNOLOGY



# High Shear Mixer HSM X·ONE

## Completing the circle!

In close cooperation with our European partners we have expanded our portfolio of product lines and now offer our customers an even wider range of pharmaceutical granulation processes.

The **HSM X·ONE** is a state-of-technology High Shear Mixer/Granulator incorporating our latest features such as 12 bar explosion containment and the **ACG X·ONE COMMAND** process control system. Complying with all international standards, our High Shear Mixer is designed to be used as a stand-alone unit or fully integrated into a granulation train.

### ▶ Best possible process conditions

The High Shear Mixer/Granulator **HSM X·ONE** is available with a Z-shaped or straight impeller as well as with a chopper in various designs, all with adjustable speed. The air purged seals for the impeller and chopper plus an optional highly accurate torque measurement will provide you with the flexibility that will meet all your process requirements.



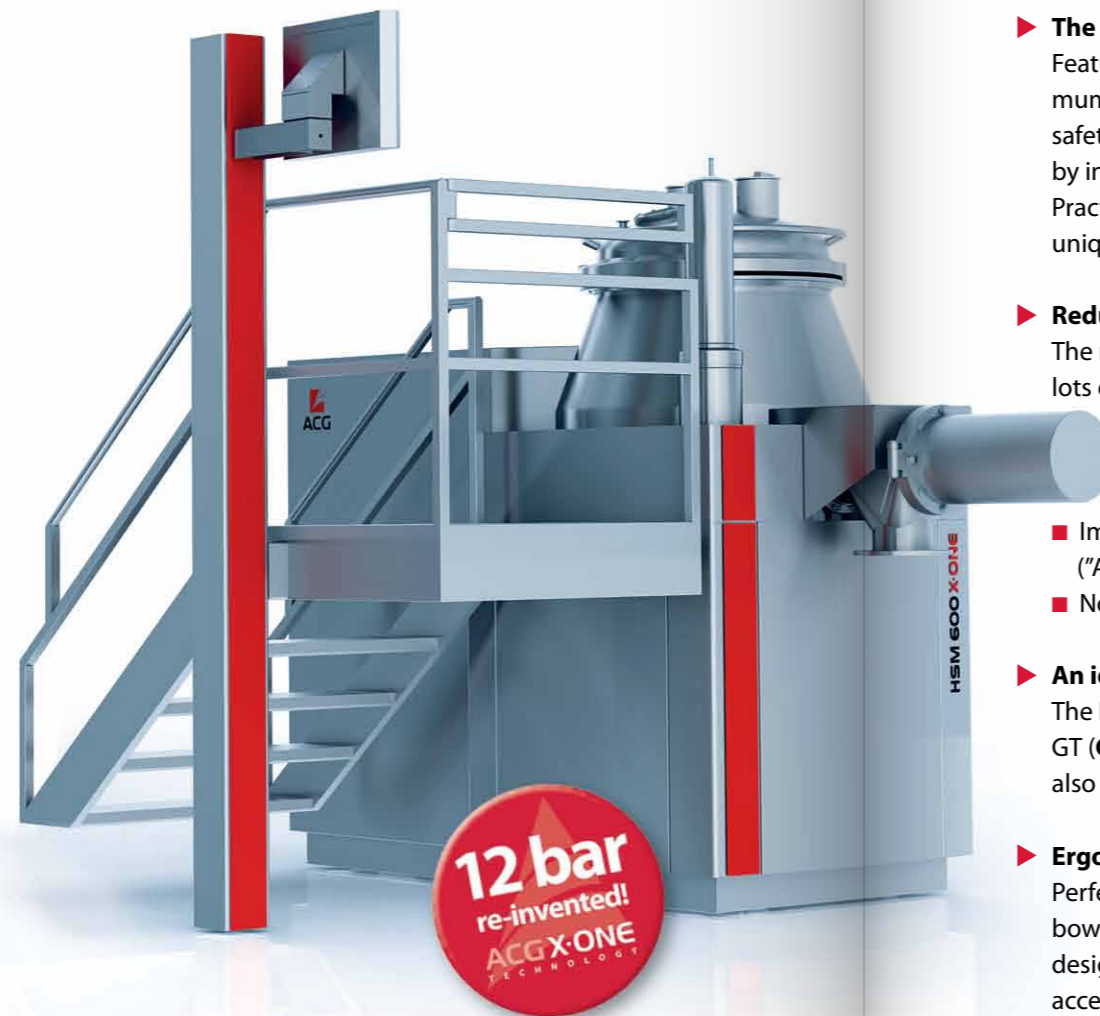
Z-shaped impeller with multi-blade chopper



Straight impeller with single or double U-shaped chopper

## The High Shear Mixer Series HSM X·ONE

Integrated or stand-alone:  
Your best choice in any case!



## Proven technology for proven processes!

A modern classic –  
with some new twists!

### ▶ The MOST possible safety

Featuring the revolutionary MOST (**Maximum Operational Safety Technology**) safety concept (patent pending), certified by independent European authorities. Practically indestructible – a completely unique approach to 12 bar safety!

### ▶ Reduced to the max

The new **X·ONE** inflatable lid seal offers lots of advantages:

- New low pressure profile guaranteeing you safety even at < 6 bar inflation pressure
- Improved material quality ("Addition Cross-Linked Platinum-Silicon")
- Now vulcanised instead of glued

### ▶ An ideal team player – and soloist

The **HSM X·ONE** is an integrated part of our GT (**Granulation Train**) product line – but also performs great as stand alone unit!

### ▶ Ergonomics and GMP

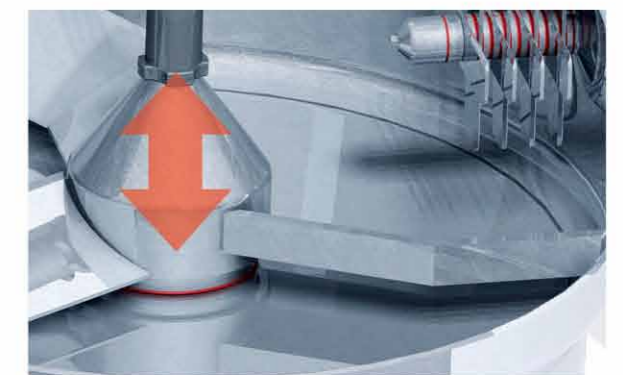
Perfect and easy access to the product bowl thanks to an ergonomically designed and perfectly positioned access platform. The unique "Multi Function Column" MFC (patent pending) is used for the integration of utility lines and wiring to the HMI. It provides a clean exterior design and sets a new standard in GMP compliance. Large height adjustable touch screen. Ergonomically optimized screen design. Optional keyboard. Make your choice!

### ▶ Safe? Safe!

Dust-Ex, Solvent-Ex ...  
nothing to worry about!



Impeller in production position with mounted lifting device



Impeller in inspection position (cleaning validation)

### ▶ Cleaning and inspection

With integrated cleaning nozzles for product bowl and discharge cleaning becomes a simple thing. And with our innovative impeller lifting system you get to it!

### ▶ Flexible in more than just one aspect

Together with our European partners we provide you with a modular system structure that will perfectly meet your individual needs.

- Free standing or through-the-wall installation
- Flexible lid hinge positions
- Flexible access platform positions
- Flexible product discharge positions
- Custom made charging and discharging concepts